

5% RANDOM SAMPLE CHECKING OF DISE
DATA 2006-2007

A Report
Submitted to

DIRECTOR,
ORISSA PRIMARY EDUCATION PROGRAMME
AUTHORITY (OPEPA)
BHUBANESWAR



Submitted by

DR. P. M. INSTITUTE OF ADVANCED STUDY
IN EDUCATION, SAMBALPUR

From,

Dr.Minaketan Pathy

Principal,
Dr.P.M.Institute of Advanced
Study in Education, Sambalpur
Cum- Project Director.

I have the pleasure to submit the report of the “5% RANDOM SAMPLE CHECKING OF DISE DATA 2006-07” conducted by Dr.P.M.Institute of Advanced Study in Education, Sambalpur (Orissa).

In this connection I acknowledge our thanks to the State Project Director, OPEPA for giving us the assignment. Thanks are also due to the District Project Co-ordinators of the district covered namely Sundargarh, Koraput and Kendrapada for extending cooperation in conducting Post Enumeration Survey.

Thanks are also due to the District Project Coordinator, Sambalpur for extending cooperation during investigators training and field tryout.

I also extend our heartiest thank to Prof.(Dr.) S.Tripathy, Director, T.E. & SCERT, Orissa, Bhubaneswar for his advice and timely feedback during the project.

I express my thanks to Dr.Umesh Prasad Khadanga, Project Coordinator and following officials namely Dr.Garudadwhaja.Barik, OIC, Sri Jagadish Ch. Naik, OIC, Dr. Narendra Ku. Biswal, Supervisor, Sri Niranjan Bhoi, Supervisor, and Sri Sangram Sahu, Supervisor for their unhesitating involvement in the programme.

(M.K.Pathy)

TABLE OF CONTENTS

| CHAPTER | DESCRIPTION | PAGE |
|------------|--|------|
| | FORWARDING LETTER | |
| | TABLE OF CONTENTS | |
| | LIST OF ABBREVIATIONS | |
| I | INTRODUCTION | |
| | 1.1 The Context | |
| | 1.2 The purpose | |
| | 1.3 Brief Outline of the Sample Districts | |
| | 1.4 Objectives | |
| | 1.5 Scope and Delimitation of the Study | |
| II | METHODOLOGY | |
| | 2.1 Collection of Field Data | |
| | 2.2 Investigators' Training | |
| | 2.3 Data Collection | |
| | 2.4 Submission of Interim Report | |
| | 2.5 List of Non-Comparable Items | |
| III | INVESTIGATORS FEEDBACK AND SCHOOL OBSERVATION | |
| | 3.1 Information on Feedback Schedule | |
| | 3.2 VEC Composition and Functioning | |
| | 3.3 School Display Board | |

3.4 Suggestion for Improving Quality of DISE Data

3.5 Functioning of EMIS Set up in the District Project Office

IV COMPARISON OF PES DATA WITH DISE DATA

4.1 Tabulation and Analysis

4.2 Comparison of PES and DISE Data in Respect of Sample District

V FINDINGS AND CONCLUSION

5.1 Major Findings

5.2 Conclusion

ANNEX. - A Details of the Sample Schools

ANNEX. – B Sample Copy of DISE - Special DCF for Post Enumeration Survey

ANNEX.-C Sample Copy of Data Collection Format [District Information System for Education (DISE) filled in Format supplied by OPEPA]

CHAPTER-I

INTRODUCTION

1.1 THE CONTEXT

Sarva Siksha Abhiyan (SSA) is a comprehensive and integrated flagship programme of government of India to attain Universal Elementary Education (UEE) covering the entire country in a mission mode. SSA was launched in 2001-2002 in partnership with the State Governments and Local Self Governments. The programme aims to provide useful relevant and need based elementary education to all children in the age group 6 to 14 by 2010. It is an initiative to universalize and improve quality of education through decentralized and context specific planning and a process based time bound implementation strategy. The programme lays emphasis on bridging all gender and social category gaps at elementary level with time bound objectives. On one hand SSA is a programme with its own targets, norms and processes and on the other it is an umbrella programme covering other programmes like DPEP. The gigantic dimensions of the programme and the financial implications call for a meticulous planning and a rigorous appraisal.

SSA envisages the preparation of a comprehensive plan of action for the educational improvement of the whole district or state. SSA requires two types of plans – annual and perspective. An annual plan proposes the interventions for a year and the perspective those over a longer period. A perspective plan shares the perspective of the state.

The plan at various levels should invariably include the demographic features. The educational profile issues and problems and the interventions which need to be undertaken in order to fill the gap between the present status and the ultimate goals of SSA.

The main sources of data required for planning and plan formulations are house hold surveys, the DISE data and research studies. The programme requires yearly updating of household survey data. The data pertaining to the schools are collected every year by the authorized agencies passing through different levels viz. school, block, district and state. It involves

lot of human as well as financial resources. Hence, it is very important to ensure the quality of the data. This is the reason of cross checking the DISE data by a post enumeration survey (PES).

1.2 THE PURPOSE

The purpose of the present assignment was to cross check DISE Data of 5% sample schools from all the blocks of 3 districts of Orissa, namely, Sundargarh, Koraput and Kendrapada. The sample districts have been drawn by the state project office of OPEPA on the basis of the guidelines provided by NUEPA. The three districts under the project represent the entire population of the state in so far as they contain, as per the guideline, districts with special focus and districts having literacy rates high, medium and low. A brief out line of the three districts are given below.

1.3 BRIEF OUTLINE ON THE SAMPLE DISTRICTS

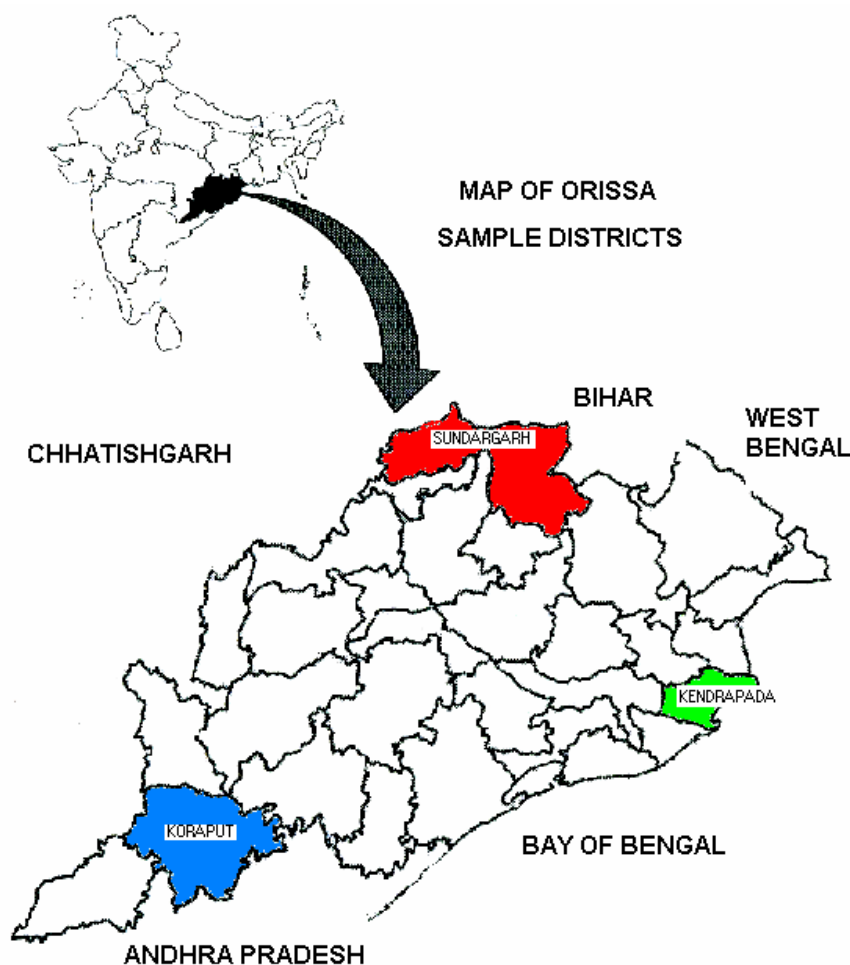


TABLE - 1.1

DEMOGRAPHIC DATA OF SAMPLE DISTRICTS

| Name of the District | Population Total / SC/ST | Literacy Total / Female | Sex Ratio | GER | NER | Dropout (Rate Classes-I-V) | No. of School |
|----------------------|---|-------------------------------|--------------|-------------------------------|---------------------------------|----------------------------------|------------------|
| SUNDARGARH | <i>In thousands</i> Total = 18,31,000 SC = 8.6% ST = 50.2% | T = 64.9% F = 53.9% | 957 | Pri. = 96.5 U.Pri = 42.8 | Pri. = 75.7 U.Pri. = 30.4 | 9.4 | 2244 |
| KORAPUT | Total = 11,81,000 SC = 13.00% ST = 49.6% | T = 35.7% F = 24.3% | 999 | Pri. = 133.4 U.Pri. = 35.4 | Pri. = 100 U.Pri. = 22.5 | 10.6 | 2183 |
| KENDRAPARA | Total = 13,02,000 SC = 20.5% ST = 0.5% | T = 76.8% F = 66.8% | 1014 | Pri. = 118.5 U.Pri. = 60.4 | Pri. = 99.5 U.Pri. = 32.6 | 4.2 | 1814 |

Source : Elementary Education in India, Vol.2, 2005-06 NUEPA, New Delhi

SUNDARGARH :

Sundargarh district is a medium level literate district with high concentration of ST population. As evident from table-I the district has 50.2% of ST population. The district has a general literacy rate of 64.9% and female literary rate of 53.9%. The sex ratio is 957/1000 in the district. The gross enrolment ratio is 96.5% at the primary level with a dropout rate of 9.4%.

KORAPUT :

Koraput is also a highly tribal concentrate district with a presence of 49.6% of different tribes. With regard to literary it is the lowest literate district in the state. The total literacy rate is 35.7% and the female literacy is as low as 24.5%. The district has a balanced sex ratio with a record of 999/1000. The Gross Enrolment Ratio at primary level is 133.4% with a dropout rate of 10.6%.

KENDRAPADA :

Kendrapada is one of the most developed districts of the state. It has only 0.5% of tribal population and 20.5% of schedule caste population. The general literacy rate stands at 76.8% and the female literacy is 66.8%. The district has a sex ratio of 1014/1000. The Gross Enrolment Ratio is 118.5% with a dropout rate of 4.2% at the primary level.

1.4 OBJECTIVES

The present work has been undertaken with the following objectives :

1. To cross check the DISE data with the PES data collected by the project team and find out the degree of variation if any.
2. To prepare a summary report relating to training of HMs in filling up DISE formats.
3. To study the state of infrastructure in the district MIS unit.
4. To examine the application of DISE data at school level.
5. To collect suggestions for quality improvement in DISE format.

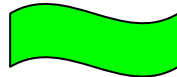
1.5 SCOPE AND DELIMITATION OF THE STUDY

The present work has been undertaken covering all the blocks of the three districts, i.e. Sundargarh, Koraput and Kendrapara. Due care has been taken to include the representative schools from both urban as well as rural areas having primary and upper primary school category.

The comparison work of PES data with that of filled in computer generated DISE data supplied by the SPO has been done covering 5% schools of all the blocks of Sundargarh district and Kendrapara district. However, in case of Koraput district 12 out of 14 blocks have been covered for comparison as data for the remaining two blocks viz. Boipariguda and Bandhugam were not available. For the same reason the DISE data relating to Bondamunda 'B' U.P. School of Bisra Block of Sundargarh district has been eliminated from comparison.

Hence, the study is delimited as follows :

- The comparison has been made only in respect of those blocks and those components for which data was made available by the State Project Office.
- The variations in data are dependent on the supplied state data and the data provided by the sample schools at the time of data collection by the project team.



CHAPTER – II

METHODOLOGY

2.1 COLLECTION OF FIELD DATA

To collect the DISE data special data capture format was supplied to the Institute by the State Project Office, OPEPA. Primary data regarding number of schools block wise for three districts were downloaded through the Internet. The required number of schools, i.e. 5% from each block from three districts were selected by following the simple random sampling technique. (See Annexure – A)

TABLE - 2.1

SAMPLE SCHOOLS CHOSEN

| District | | Total No. of schools in the district | No. of sample schools selected | Percentage |
|--------------|------------|--------------------------------------|--------------------------------|--------------|
| 1. | Sundargarh | 2323 | 121 | 5.21% |
| 2. | Koraput | 1957 | 103 | 5.26% |
| 3. | Kendrapada | 1764 | 88 | 5.00% |
| TOTAL | | 6044 | 312 | 5.16% |

2.2 INVESTIGATORS' TRAINING

An advertisement was made on the Institute Notice Board inviting applications from desirous candidates to act as investigators. After scrutiny, all eligible applicants were selected as investigators for the post enumeration survey. The selected investigators were divided into 3 groups for 3 districts under the leadership of 3 supervisors and 3 officers in charge. All of them were subject to undergo a two days training programme with practice session in selected primary and upper primary schools. The training programme was conducted on 27th and 28th of July, 2007. During the training, the investigators were given opportunity to work with the formats in the nearby schools of Sambalpur Municipality and peripheral villages. Their field observations and reactions were studied and possible remedial measures for

overcoming such problems were discussed, which might occur in actual field situation.

2.3 DATA COLLECTION

All the three teams left Sambalpur on the 30th July, 2007 morning for the target districts. The field observations and data collection work continued from 31st July to 10th August, 2007. After returning from the field the teams were assembled and had a sharing meeting in the conference hall of the Institute for discussion of modalities of analysis and cross checking.

2.4 SUBMISSION OF INTERIM REPORT

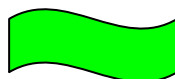
The interim report was presented on the scheduled date on 16th August, 2007 in the OPEPA office by Dr.U.P.Khadanga, Coordinator of the project. Along with that, the state office was requested to supply the filled in DISE formats against the sample schools. The state office supplied the filled in DISE formats against the sample schools by compiling the data collected through CTS, EPIS, and GIS formats. The data were supplied in hard copy in two phases respectively on 24th August and 30th August, 2007 for cross checking.

In the supplied data, quite a good number of items as enlisted below have been left blank which posed some problems for cross checking and could not get compared.

2.5 LIST OF NON-COMPARABLE ITEMS

1. Pre-primary sections attached to school
2. Total students pre-primary
3. No. of instructional days last academic year
4. No. of academic inspections last academic year
5. No. of visits by CRCs last academic year
6. No. of visits by BRCs last academic year
7. Details school grants received from SSA
8. Details of school maintenance grants received from SSA

9. Details of TLM grants received from SSA
10. Funds collected from the students
11. Funds collected from other sources
12. No. of classrooms having blackboards for students
13. Book bank
14. No. of black board
15. No. of Almirahs
16. No. of trunks
17. No. of books in school library
18. Medical checkup of students
19. School data capture formats for teachers
20. New admissions and transfer cases
21. Enrolment by age
22. Enrolment by medium of instruction
23. Incentive details of last academic year (Primary only)
24. Incentive details of last academic year (Upper Primary only)
25. Year of establishment of school
26. Teachers details male/female
27. Non-teaching staff details male/female
28. Educational qualification of the Principal/Headmaster
29. No. of years working as Principal/Headmaster in the school
30. No. of years of experience as Principal/Headmaster
31. Enrolment and attendance details of children on the day of survey
32. Grade wise examination details for the last academic year



CHAPTER – III

INVESTIGATORS FEEDBACK AND SCHOOL OBSERVATION

3.1 INFORMATION ON FEEDBACK SCHEDULE

The present report also covers field observation of the investigators and supervisors regarding training of Headmasters in terms of school report cards, school display board, suggestions and recommendations for improving the quality of DISE data etc. One more additional schedule i.e. Investigators' Feedback Schedule was used to observe and record in the field to render assessment of the field situation. When the items of the investigators feedback schedule were analysed following field situations came into front.

It was observed that, the schools were not using the DISE format for dissemination of data. When asked about the reason, the HMs/HM I/C of the schools replied that, they were not supplied with such formats. The records maintained by the schools were haphazard and in many cases even not up to date. So far as the visits of Supervisory authorities (BRCCs, CRCCs, DIs, SIs etc.) are concerned, the rural areas have remained neglected. The VEC members in rural areas are mostly unaware about their duties and responsibilities and possess low participation in developmental activities of schools. Rather they simply put their signatures.

Most of the HMs were not familiar with the use of DISE data as they have not received any training on it. However, those HMs who have been informed about the DISE format by the BRCCs and CRCCs were found to be aware of the system. Such HMs are able to maintain the data of their respective schools. But their number is quite few.

A special mention may be made here that the DISE data are useful for various compilations at Block, District, State and National levels and at each level the items in DISE format play significant role. Hence the correctness of DISE data needs to be ensured. It is necessary that all agencies right from the block level to the national level should stick to the same format in order to maintain uniformity at all levels.

In the present survey an attempt has been made to review the attitude of HMs towards the investigators while providing the information. An analysis of such observation schedules revealed the following.

SUNDARGARH :

- In most of the schools the HMs were not able to provide up to date data on DISE.
- The BRCC who are dynamic, sincere and committed have proven their job as manifested at school level. The schools and HMs under the control of such BRCC, have been updating the information to be incorporated in DISE sincerely.
- It was observed that some of the schools are not having Display Board in the schools even at Sundargarh Sadar Block.
- Regarding the pedagogical aspects of the D.P.O. they have been able to transmit it very well through conduct of different training modules.
- It was also observed that most of the schools are yet to develop child friendly elements in the school.
- Sanitation and drinking water facilities are available in most of the schools.

KORAPUT :

- The data relating to DISE are not updated at the school level.
- Most of the schools are having only one teacher to look after the activities in addition to classroom transaction which hampers the quality of work.
- Most of the BRCCs and CRCCs are not able to perform their duties satisfactorily excepting a very few.

- The MDM programme is going on smoothly.
- The schools which are maintaining their records very well seem to be lower in the academic front.
- Most of the schools are located in such habitation area which does not have proper communication.

KENDRAPARA :

- The data relating to DISE are being properly maintained in most of the schools.
- The HMs of most of the schools are facing problems for utilizing the funds available with them, as alleged, due to interference of VEC members.
- The reports of the DISE data submitted and the school summary report received by the schools do not tally in most of the schools.
- The MDM programme in the district is going on smoothly.
- There are over crowded situation in some of the schools. The teacher-student ratio has to be maintained in such schools.

3.2 VEC COMPOSITION AND FUNCTIONING

TABLE - 3.1

OBSERVATION ON VEC COMPOSITION AND THEIR FUNCTIONING

| Sl. No. | District | No. of schools visited | VEC as per norms | Not responded |
|----------------|-----------------|-------------------------------|-------------------------|----------------------|
| 1. | Sundargarh | 121 | 120 | 01 |
| 2. | Koraput | 103 | 101 | 02 |
| 3. | Kendrapada | 88 | 85 | 03 |

N.B. : All the schools visited have VECs as per norms.

As per the observation notes of the investigators almost all the sample schools of three districts were having VEC formed as per the SSA norms. But as regards the participation of the members of VECs, it was found that about half of the members are participating in different developmental activities of their respective schools. In most of the cases the VEC members particularly in a developed district like Kendrapada were alleged to be having too much of interference leading to slow utilisation of funds, as reported by most of the headmasters. On an average the VECs met for once/twice per month as reported by the school Headmaster and also in the VEC registers.

3.3 SCHOOL DISPLAY BOARD

TABLE - 3.2

AVAILABILITY OF DISPLAY BOARD

| Sl. No. | District | No. of schools visited | Available | Not available | Not responded |
|----------------|-----------------|-------------------------------|------------------|----------------------|----------------------|
| 1. | Sundargarh | 121 | 109(90%) | 09 (7%) | 03(3%) |
| 2. | Koraput | 103 | 88(85%) | 11(11%) | 04(4%) |
| 3. | Kendrapada | 88 | 50(57%) | 20(23%) | 18(20%) |
| TOTAL | | 312 | 247(79%) | 40(13%) | 25(8%) |

As regards the position of display board in the sample schools, in Sundargarh district out of 121 schools 109 (90%) schools have display board in the school. Similarly school display boards were available in 88 (85%) schools in the Koraput district. But the situation was quite different in case of Kendrapada district where, only 50 (56.8%) schools out of 88 were having display board. However, the funds received and its utilisation part against different heads did not find place in most of the school display boards in all the 3 sample districts.

3.4 SUGGESTIONS FOR IMPROVING THE QUALITY OF DISE DATA

The importance of DISE data is directly linked with the planning and further use of data at different levels. But it was observed during the process of data collection that for most of the HMs the format was quite new. Hence, they could not suggest any thing for the improvement in the DISE format. However, it is suggested that they must be made familiar with such data capture format before obtaining their reactions on it. The BRCCs/CRCCs/HMs got Xerox copies of the PES format from the investigators.

Those BRCCs and CRCCs who had got opportunities to participate at the state level meeting had a little knowledge of it. Hence, proper planning must be made at the state level in order to provide ample opportunities of training in respect of filling up of DISE data.

TABLE – 3.3**QUALITY OF RESPONSE FROM HEADMASTERS OF SUNDARGARH**

| Sl. No. | Item | RESPONSES | | | | |
|---------|---------------------------------------|---------------|---------------|---------------|---------------|--------------|
| | | Very Good | Good | Average | Poor | Very Poor |
| 01. | Reaction of Headmaster | 62 (51.24) | 44 (36.36) | 15 (12.40) | - | - |
| 02. | Response of HM to provide information | 56 (46.28) | 38 (31.40) | 20 (16.53) | 07 (5.79) | - |
| 03. | Availability of records | 36 (29.75) | 40 (33.06) | 15 (12.40) | 20 (16.53) | 10 (8.26) |
| 04. | Condition of record maintained | 16 (13.22) | 40 (33.06) | 45 (37.19) | 13 (10.74) | 07 (5.79) |
| 05. | Updating of records maintained | 18 (14.88) | 38 (31.40) | 46 (38.02) | 10 (8.26) | 09 (7.44) |

TABLE – 3.4**QUALITY OF RESPONSE FROM HEADMASTERS OF KORAPUT**

| | | Very Good | Good | Average | Poor | Very Poor |
|-----|---------------------------------------|---------------|---------------|---------------|---------------|-----------|
| 01. | In Reaction of HM | 70 (76.92) | 10 (10.99) | 11 (12.09) | - | - |
| 02. | Response of HM to provide information | 64 (70.32) | 12 (13.19) | 14 (15.38) | 01 (1.10) | - |
| 03. | Availability of records | 71 (78.02) | 09 (9.89) | 10 (10.99) | 01 (1.10) | - |
| 04. | Condition of record maintained | 17 (18.68) | 50 (54.95) | 24 (26.37) | - | - |
| 05. | Updating of records maintained | 10 (10.99) | 30 (32.97) | 25 (27.47) | 26 (28.57) | - |

TABLE – 3.5**QUALITY OF RESPONSE FROM HEADMASTERS OF KENDRAPARA**

| | | Very Good | Good | Average | Poor | Very Poor |
|-----|---------------------------------------|---------------|---------------|---------------|--------------|-----------|
| 01. | In Reaction of HM | 50 (56.82) | 30 (34.09) | 08 (9.09) | - | - |
| 02. | Response of HM to provide information | 30 (34.09) | 50 (56.82) | 08 (9.09) | - | - |
| 03. | Availability of records | 20 (22.73) | 60 (68.18) | 05 (5.68) | 03 (3.41) | - |
| 04. | Condition of record maintained | 10 (11.36) | 60 (68.18) | 15 (17.05) | 03 (3.41) | - |
| 05. | Updating of records maintained | 15 (17.05) | 60 (68.18) | 08 (9.09) | 05 (5.68) | - |

The above tables show that although the response of majority of the Headmasters has been either very good or good availability of records in school take a back seat specially in Sundargarh (25% school falling in poor or very poor categories). Also regularity in updating of records maintained is needed in all these districts.

3.5 FUNCTIONING OF EMIS SETUP IN THE DISTRICT PROJECT OFFICE

Each district headquarters under SSA have been provided with EMIS units for smooth coordination of data collection and their organization through computerization. These formats are to be disseminated/transmitted to higher authorities.

To make the data dissemination system efficient, everyone involved with data processing in the EMIS unit should be properly trained. The structure, staff position and functioning of EMIS units of the three districts under study are as follows :

SUNDARGARH :

The EMIS unit of Sundargarh is functioning very well. There are 03 Nos. of Data Entry Operators at D.P.O. and 02 out of 03 D.E.Os. at D.I. of Schools level for three education districts of Sundargarh District.

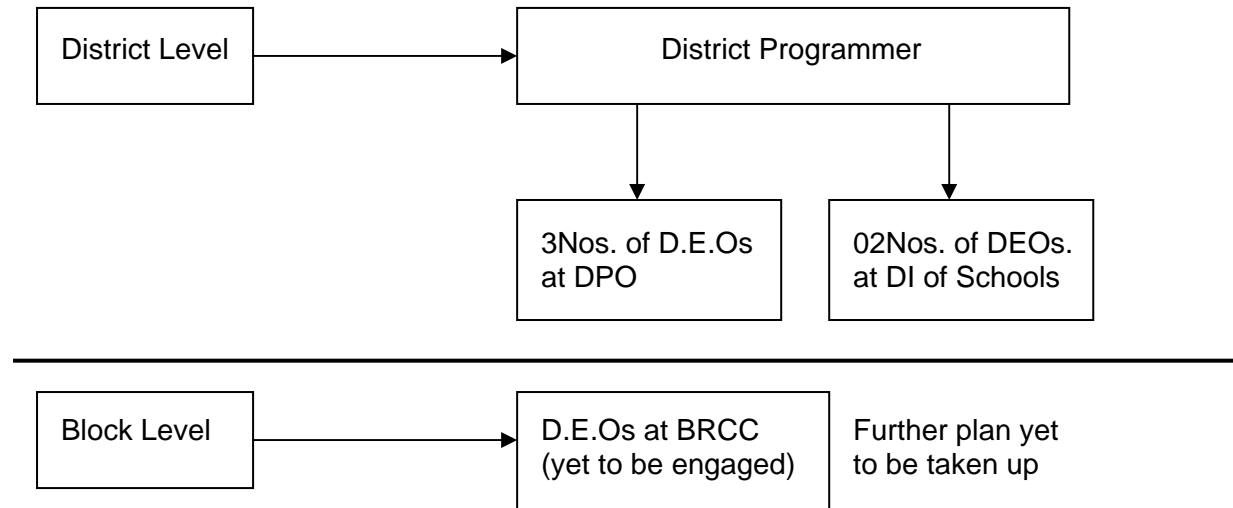
The entire D.P.O. is fully LAN based, individual systems have been provided to each intervention heads with a shared printing facility. In addition to this the D.I. of schools are fully equipped with upgraded systems, FAX facilities. Above all, systems are also available at most of the B.R.C. points for which the district has been appreciated at the state level.

The project e-SHISHU has enabled the MIS section to view all the three main stake holders, i.e. children, teachers and schools on one platform. The data base has been maintained since 2003 – 2004, after collecting the school level information through DISE. The analysis of DISE has been done and shared with the district level officials.

The planning of the district has been made on the basis of CTS and DISE data. All the BRCC have been oriented on PMIS and EMIS throughout the district for better monitoring and implementation of the project work.

The following is an architecture of MIS of Sundargarh

District Project Office.



However, one planning coordinator post is lying vacant since 31st May, 2007 as the person resigned from the post and the computer programmer is managing his work in addition to his own.

KORAPUT :

The MIS setup of the Koraput DPC office is well equipped with computers and FAX facilities. The computer programmer is assisted by three DEOs for updating the DISE data from time to time resulting in a systematic data base creation.

The BRCCs and CRCCs of the district are dynamic and cooperative. But they face a lot of problems during implementation of interventions as the location of the schools are mostly in the hilly and dense forest area. This situation also posed problems for investigators, as the communication to these schools are not good.

KENDRAPARA :

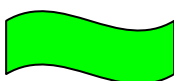
Kendrapara DPC office is functioning within the Kendrapara Autonomous College campus. It has no separate building of its own. It has a well furnished MIS section with three computers and a server in good working condition. In this section one programmer and two data

interpreters were present. One post of pedagogy coordinator and one planning coordinator post are lying vacant for two years. DPC and programmers are very cooperative in providing different data.

TABLE – 3.6

PERCENTAGE OF ATTENDANCE ON THE DAY OF SURVEY

| District | | Total | | SC | | ST | |
|---|--------------|---------------|-------|---------------|-------|---------------|-------|
| | | Boys | Girls | Boys | Girls | Boys | Girls |
| SUNDARGARH | | | | | | | |
| | Enrolment | 9624 | 8943 | 1079 | 1031 | 5851 | 5231 |
| | Attendance | 7097 | 6576 | 764 | 713 | 4290 | 3884 |
| | % of Attend. | 73.74 | 73.53 | 70.81 | 69.16 | 73.32 | 74.25 |
| KORAPUT | | | | | | | |
| | Enrolment | 6627 | 5746 | 1427 | 1261 | 3082 | 2350 |
| | Attendance | 4165 | 3565 | 811 | 678 | 1944 | 1482 |
| | % of Attend. | 62.85 | 62.04 | 56.83 | 53.77 | 63.08 | 63.06 |
| KENDRAPADA | | | | | | | |
| | Enrolment | 6842 | 6967 | 1763 | 1715 | 48 | 64 |
| | Attendance | 5414 | 5480 | 1280 | 1296 | 22 | 36 |
| | % of Attend. | 79.13 | 78.66 | 72.60 | 75.57 | 45.83 | 56.25 |
| TOTAL | | | | | | | |
| | Enrolment | 23093 | 21656 | 4269 | 4007 | 8981 | 7645 |
| | Attendance | 16676 | 15621 | 2855 | 2687 | 6256 | 5402 |
| | % of Attend. | 72.21 | 72.13 | 66.88 | 67.06 | 69.66 | 70.66 |
| Average %age of Attendance (B+G) | | 72.17% | | 66.97% | | 70.16% | |



CHAPTER – IV

COMPARISON OF PES DATA WITH DISE DATA

4.1 TABULATION AND ANALYSIS

The present report is based on the comparison of tabulated information of data as on 30.09.2006 gathered through the post enumeration survey with that of already available filled in DISE formats in respect of the sample schools. Simple deviations of data have been calculated for all comparable items and the overall deviations of data have been calculated through the following formula :

$$\frac{d^1 + d^2 + d^3 + \dots + d^x}{a + b + c + \dots + x} \times 100$$

Where 'd' stands for deviation of items of DISE data from post enumeration survey data ignoring \pm signs and a, b, c denote items of post enumeration survey data.

The item wise and sub item wise comparison of PES data with DISE data along with calculation of deviations for the sample districts ignoring positive and negative signs and the precision level thereby arrived at is given in the table No. 4.1 to 4.28 separately for the three districts simultaneously. The overall deviations against different items have been arrived at by calculating the combined effect of deviations of the three districts.

4.2 COMPARISON OF PES AND DISE DATA IN RESPECT OF THE SAMPLE DISTRICTS

TABLE – 4.1
COMPARISON OF PES DATA WITH DISE DATA ON CATEGORY OF SCHOOLS

| School Category | | Sundargarh | | | Koraput | | | Kendrapara | | | Total | | |
|----------------------|-----------------|------------|---------|-------|---------|---------|-------|------------|---------|-------|-------|---------|-------|
| | | Pri. | Pri.+UP | UP | Pri. | Pri.+UP | UP | Pri. | Pri.+UP | UP | Pri. | Pri.+UP | UP |
| Sample size reported | PES | 53 | 53 | 14 | 50 | 36 | 05 | 38 | 47 | 03 | 141 | 136 | 22 |
| | DISE | 58 | 49 | 13 | 58 | 31 | 02 | 38 | 40 | 09 | 154 | 120 | 24 |
| | Deviation | 05 | 04 | 01 | 08 | 05 | 03 | 00 | 07 | 06 | 13 | 16 | 02 |
| | % of Deviation | 4.16 | 3.33 | 0.83 | 8.79 | 5.49 | 3.30 | 00 | 7.95 | 6.82 | 4.35 | 5.35 | 0.67 |
| | Precision Level | 95.83 | 96.67 | 99.17 | 91.21 | 94.51 | 96.70 | 100 | 92.05 | 93.18 | 95.65 | 94.65 | 99.33 |

TABLE – 4.2
COMPARISON OF PES DATA WITH DISE DATA ON TYPE OF SCHOOLS

| Type of Schools | | Sundargarh | Koraput | Kendrapara | TOTAL |
|-----------------|-----------------|------------|---------|------------|-------|
| BOYS | PES | - | - | - | - |
| | DISE | - | - | - | - |
| | Deviation | - | - | - | - |
| | % of Deviation | - | - | - | - |
| | Precision Level | - | - | - | - |
| GIRLS | PES | - | - | 02 | 02 |
| | DISE | - | - | 00 | 00 |
| | Deviation | - | - | 02 | 02 |
| | % of Deviation | - | - | 2.27 | 0.67 |
| | Precision Level | - | - | 97.73 | 99.33 |
| CO-EDUCATION | PES | 120 | 91 | 86 | 297 |
| | DISE | 120 | 91 | 88 | 299 |
| | Deviation | 00 | 00 | 02 | 02 |
| | % of Deviation | 00 | 00 | 2.27 | 0.67 |
| | Precision Level | 100 | 100 | 97.73 | 99.33 |

TABLE – 4.3
**COMPARISON OF PES DATA WITH DISE DATA ON LOCATION OF
SAMPLE SCHOOLS**

| Location | | Sundargarh | Koraput | Kendrapara | TOTAL |
|----------|-----------------|------------|---------|------------|-------|
| RURAL | PES | 109 | 75 | 84 | 268 |
| | DISE | 109 | 75 | 84 | 268 |
| | Deviation | 00 | 00 | 00 | 00 |
| | % of Deviation | 00 | 00 | 00 | 00 |
| | Precision Level | 100 | 100 | 100 | 100 |
| URBAN | PES | 11 | 16 | 04 | 31 |
| | DISE | 11 | 16 | 04 | 31 |
| | Deviation | 00 | 00 | 00 | 00 |
| | % of Deviation | 00 | 00 | 00 | 00 |
| | Precision Level | 100 | 100 | 100 | 100 |

TABLE – 4.4
COMPARISON OF PES DATA WITH DISE DATA ON LOWEST CLASS IN
THE SCHOOLS

| Lowest Class | | Sundargarh | Koraput | Kendrapara | TOTAL |
|--------------|-----------------|------------|---------|------------|-------|
| I | PES | 107 | 86 | 78 | 271 |
| | DISE | 107 | 89 | 78 | 274 |
| | Deviation | 00 | 03 | 00 | 03 |
| | % of Deviation | 00 | 3.30 | 00 | 1.00 |
| | Precision Level | 100 | 96.70 | 100 | 99.00 |
| VI | PES | 13 | 05 | 10 | 28 |
| | DISE | 13 | 02 | 10 | 25 |
| | Deviation | 00 | 03 | 00 | 03 |
| | % of Deviation | 00 | 3.30 | 00 | 1.00 |
| | Precision Level | 100 | 96.70 | 100 | 99.00 |

TABLE – 4.5
COMPARISON OF PES DATA WITH DISE DATA ON HIGHEST CLASS IN
THE SCHOOLS

| Highest Class | | Sundargarh | Koraput | Kendrapara | TOTAL |
|---------------|-----------------|------------|---------|------------|-------|
| III / IV | PES | - | - | - | - |
| | DISE | - | - | - | - |
| | Deviation | - | - | - | - |
| | % of Deviation | - | - | - | - |
| | Precision Level | - | - | - | - |
| V | PES | 54 | 50 | 39 | 143 |
| | DISE | 58 | 58 | 38 | 154 |
| | Deviation | 04 | 08 | 01 | 11 |
| | % of Deviation | 3.33 | 8.79 | 1.14 | 3.68 |
| | Precision Level | 96.67 | 91.21 | 98.86 | 96.32 |
| VII | PES | 66 | 41 | 49 | 156 |
| | DISE | 62 | 33 | 50 | 145 |
| | Deviation | 04 | 08 | 01 | 11 |
| | % of Deviation | 3.33 | 8.79 | 1.14 | 3.68 |
| | Precision Level | 96.67 | 91.21 | 98.86 | 96.32 |

TABLE – 4.6
COMPARISON OF PES DATA WITH DISE DATA ON SCHOOL
MANAGEMENT

| School Management | | Sundargarh | Koraput | Kendrapara | TOTAL |
|--------------------------------------|-----------------|------------|---------|------------|-------|
| Deptt. of School & Mass Edn. (Govt.) | PES | 117 | 87 | 87 | 291 |
| | DISE | 117 | 90 | 85 | 292 |
| | Deviation | 00 | 03 | 02 | 01 |
| | % of Deviation | 00 | 3.30 | 2.27 | 0.33 |
| | Precision Level | 100 | 96.70 | 97.73 | 99.67 |
| Private Aided/Taken Over & Others | PES | 03 | 04 | 01 | 08 |
| | DISE | 03 | 01 | 03 | 07 |
| | Deviation | 00 | 03 | 02 | 01 |
| | % of Deviation | 00 | 3.30 | 2.27 | 0.33 |
| | Precision Level | 100 | 96.70 | 97.73 | 99.67 |

TABLE – 4.7
COMPARISON OF PES DATA WITH DISE DATA ON RESIDENTIAL
STATUS OF SAMPLE SCHOOLS

| Residential Status | | Sundargarh | Koraput | Kendrapara | TOTAL |
|--------------------|-----------------|------------|---------|------------|-------|
| Residential | PES | 08 | 07 | 00 | 15 |
| | DISE | 13 | 04 | 00 | 17 |
| | Deviation | 05 | 03 | 00 | 02 |
| | % of Deviation | 4.17 | 3.30 | 00 | 0.67 |
| | Precision Level | 95.83 | 96.70 | 00 | 99.33 |
| Non-Residential | PES | 112 | 84 | 88 | 284 |
| | DISE | 107 | 87 | 77 | 271 |
| | Deviation | 05 | 03 | 11 | 13 |
| | % of Deviation | 4.17 | 3.30 | 12.50 | 4.35 |
| | Precision Level | 95.83 | 96.70 | 87.50 | 95.65 |
| Not Responded | PES | - | - | - | - |
| | DISE | 00 | 00 | 11 | 11 |
| | Deviation | 00 | 00 | 11 | 11 |
| | % of Deviation | 00 | 00 | 12.50 | 3.67 |
| | Precision Level | 00 | 00 | 87.50 | 96.32 |

TABLE – 4.8
COMPARISON OF PES DATA WITH DISE DATA ON BEING A PART OF
SHIFT SCHOOL

| School being a part of shift school | | Sundargarh | Koraput | Kendrapara | TOTAL |
|-------------------------------------|-----------------|------------|---------|------------|-------|
| Being a part of Shift school | PES | 07 | 00 | 01 | 08 |
| | DISE | 05 | 00 | 01 | 06 |
| | Deviation | 02 | 00 | 00 | 02 |
| | % of Deviation | 1.67 | 00 | 00 | 0.67 |
| | Precision Level | 98.33 | 00 | 100 | 99.33 |
| Not being a part of shift school | PES | 113 | 91 | 87 | 291 |
| | DISE | 115 | 91 | 76 | 282 |
| | Deviation | 02 | 00 | 11 | 09 |
| | % of Deviation | 1.67 | 00 | 12.50 | 3.01 |
| | Precision Level | 98.33 | 100 | 87.50 | 96.99 |

TABLE – 4.9
COMPARISON OF PES DATA WITH DISE DATA ON SANCTIONED
POSITION OF TEACHERS

| Teachers Posts | | Sundargarh | Koraput | Kendrapara | TOTAL |
|----------------------|-----------------|------------|---------|------------|-------|
| Sanctioned Strength | PES | 504 | 292 | 374 | - |
| | DISE | 516 | 226 | 374 | - |
| | Deviation | - | - | - | - |
| | % of Deviation | - | - | - | - |
| | Precision Level | - | - | - | - |
| Not Responded | PES | 07 | 08 | 01 | - |
| | DISE | - | 23 | 07 | - |
| Teachers in Position | PES | 574 | 368 | 403 | - |
| | DISE | 498 | 335 | 324 | - |
| | Deviation | - | - | - | - |
| | % of Deviation | - | - | - | - |
| | Precision Level | - | - | - | - |
| Not Responded | PES | 07 | 08 | 01 | - |
| | DISE | - | 23 | 07 | - |

N.B. : *Teachers sanctioned post data and teachers in position could not be compared due to non receipt of data in complete form.*

TABLE – 4.10
COMPARISON OF PES DATA WITH DISE DATA ON STATUS OF SCHOOL BUILDING

| School Building Status | | Sundargarh | Koraput | Kendrapara | TOTAL |
|------------------------|-----------------|------------|---------|------------|-------|
| PRIVATE | PES | 02 | 00 | 03 | 05 |
| | DISE | 00 | 00 | 01 | 01 |
| | Deviation | 02 | 00 | 02 | 04 |
| | % of Deviation | 1.67 | 00 | 2.27 | 1.34 |
| | Precision Level | 98.33 | 00 | 97.73 | 98.66 |
| GOVT. | PES | 117 | 90 | 85 | 292 |
| | DISE | 120 | 90 | 85 | 295 |
| | Deviation | 03 | 00 | 00 | 03 |
| | % of Deviation | 0.83 | 00 | 00 | 1.00 |
| | Precision Level | 99.17 | 100 | 100 | 99.00 |
| RENTED/OTHERS | PES | 01 | 01 | 00 | 02 |
| | DISE | 00 | 01 | 00 | 01 |
| | Deviation | 01 | 00 | 00 | 01 |
| | % of Deviation | 0.83 | 00 | 00 | 0.33 |
| | Precision Level | 99.17 | 100 | 00 | 99.67 |
| NO BUILDING AT ALL | PES | 00 | 00 | 02 | 02 |
| | DISE | 00 | 00 | 00 | 00 |
| | Deviation | 00 | 00 | 02 | 02 |
| | % of Deviation | 00 | 00 | 2.27 | 0.67 |
| | Precision Level | 00 | 00 | 97.73 | 99.33 |

TABLE – 4.11
COMPARISON OF PES DATA WITH DISE DATA ON NO. OF BLOCKS IN SCHOOLS

| No. of Block | | Sundargarh | Koraput | Kendrapara | TOTAL |
|--------------------|-----------------|------------|---------|------------|-------|
| ONE | PES | 35 | 28 | 22 | 85 |
| | DISE | 29 | 35 | 29 | 93 |
| | Deviation | 06 | 07 | - | - |
| | % of Deviation | 5.00 | 7.69 | - | - |
| | Precision Level | 95.00 | 92.31 | - | - |
| TWO | PES | 37 | 23 | 38 | 98 |
| | DISE | 38 | 28 | 29 | 95 |
| | Deviation | 01 | 05 | - | - |
| | % of Deviation | 0.83 | 5.49 | - | - |
| | Precision Level | 99.17 | 94.51 | 89.77 | 99.00 |
| THREE OR MORE | PES | 48 | 40 | 26 | 114 |
| | DISE | 53 | 28 | 27 | 108 |
| | Deviation | 05 | 12 | - | - |
| | % of Deviation | 4.17 | 13.19 | - | - |
| | Precision Level | 95.83 | 86.81 | - | - |
| NO BUILDING AT ALL | PES | 00 | 00 | 02 | 02 |
| | DISE | 00 | 00 | - | - |
| | Deviation | 00 | 00 | - | - |
| | % of Deviation | 00 | 00 | - | - |
| | Precision Level | 00 | 00 | - | - |

N.B. : *DISE data not available for 03 Nos. of Schools of Kendrapara District. Hence, could not be compared.*

TABLE – 4.12
COMPARISON OF PES DATA WITH DISE DATA ON TYPE OF SCHOOL BUILDING

| Building Type | | Sundargarh | Koraput | Kendrapara | TOTAL |
|---------------|-----------------|------------|---------|------------|-------|
| Pucca | PES | 444 | 149 | 261 | 854 |
| | DISE | 351 | 63 | 215 | 629 |
| | Deviation | 93 | 86 | 46 | 225 |
| | % of Deviation | 77.50 | 94.51 | 52.27 | 75.25 |
| | Precision Level | 22.50 | 5.49 | 47.73 | 24.75 |
| Partly Pucca | PES | 209 | 256 | 170 | 635 |
| | DISE | 286 | 217 | 237 | 740 |
| | Deviation | 77 | 39 | 67 | 105 |
| | % of Deviation | 64.17 | 42.85 | 76.14 | 35.12 |
| | Precision Level | 35.83 | 57.14 | 23.86 | 64.88 |
| Kuchha | PES | 59 | 21 | 06 | 86 |
| | DISE | 33 | 08 | 09 | 50 |
| | Deviation | 26 | 13 | 03 | 36 |
| | % of Deviation | 21.67 | 14.29 | 3.41 | 12.04 |
| | Precision Level | 78.33 | 85.71 | 96.59 | 87.96 |

TABLE – 4.13
COMPARISON OF PES DATA WITH DISE DATA ON CONDITION OF CLASS ROOMS IN THE SCHOOLS

| Class Room Condition | | Sundargarh | Koraput | Kendrapara | TOTAL |
|----------------------|-----------------|------------|---------|------------|-------|
| Good | PES | 279 | 162 | 188 | 629 |
| | DISE | 254 | 252 | 257 | 763 |
| | Deviation | 25 | 90 | 69 | 134 |
| | % of Deviation | 20.83 | 98.90 | 78.41 | 44.82 |
| | Precision Level | 79.17 | 1.10 | 21.59 | 55.18 |
| Need Minor Repair | PES | 156 | 164 | 87 | 407 |
| | DISE | 268 | 124 | 85 | 477 |
| | Deviation | 112 | 40 | 02 | 70 |
| | % of Deviation | 93.33 | 43.96 | 2.27 | 23.41 |
| | Precision Level | 6.67 | 56.04 | 97.73 | 76.59 |
| Need Major Repair | PES | 235 | 115 | 163 | 513 |
| | DISE | 248 | 51 | 121 | 420 |
| | Deviation | 13 | 64 | 42 | 93 |
| | % of Deviation | 10.83 | 70.33 | 47.73 | 31.10 |
| | Precision Level | 89.17 | 29.67 | 52.27 | 68.90 |

TABLE – 4.14
COMPARISON OF PES DATA WITH DISE DATA ON TYPE COMMON
TOILET AVAILABLE

| Availability of Toilet | | Sundargarh | Koraput | Kendrapara | TOTAL |
|-----------------------------|-----------------|------------|---------|------------|-------|
| Common Toilet Available | PES | 77 | 43 | 55 | 175 |
| | DISE | 75 | 31 | 50 | 156 |
| | Deviation | 02 | 12 | 05 | 19 |
| | % of Deviation | 1.67 | 13.19 | 5.68 | 6.35 |
| | Precision Level | 98.33 | 86.81 | 94.32 | 93.65 |
| Common Toiled Not available | PES | 43 | 48 | 33 | 124 |
| | DISE | 45 | 60 | 38 | 143 |
| | Deviation | 02 | 12 | 05 | 19 |
| | % of Deviation | 1.67 | 13.19 | 5.68 | 6.35 |
| | Precision Level | 98.33 | 86.81 | 94.32 | 93.65 |

TABLE – 4.15
COMPARISON OF PES DATA WITH DISE DATA ON SEPARATE TOILETS
FOR GIRLS IN THE SCHOOL

| Separate Toilet for Girls | | Sundargarh | Koraput | Kendrapara | TOTAL |
|---------------------------|-----------------|------------|---------|------------|-------|
| Available | PES | 44 | 40 | 45 | 129 |
| | DISE | 37 | 24 | 20 | 81 |
| | Deviation | 07 | 16 | 25 | 48 |
| | % of Deviation | 5.83 | 17.58 | 28.41 | 16.05 |
| | Precision Level | 94.17 | 82.42 | 71.59 | 83.95 |
| Not Available | PES | 76 | 51 | 43 | 170 |
| | DISE | 83 | 67 | 68 | 218 |
| | Deviation | 07 | 16 | 25 | 48 |
| | % of Deviation | 5.83 | 17.58 | 28.41 | 16.05 |
| | Precision Level | 94.17 | 82.42 | 71.59 | 83.95 |

TABLE – 4.16
COMPARISON OF PES DATA WITH DISE DATA ON ELECTRICITY IN
SCHOOL

| Electricity in School | | Sundargarh | Koraput | Kendrapara | TOTAL |
|-----------------------|-----------------|------------|---------|------------|-------|
| Available | PES | 27 | 16 | 20 | 63 |
| | DISE | 53 | 37 | 43 | 133 |
| | Deviation | 26 | 21 | 23 | 70 |
| | % of Deviation | 21.67 | 23.08 | 26.14 | 23.41 |
| | Precision Level | 78.33 | 76.92 | 73.86 | 76.59 |
| Not Available | PES | 93 | 75 | 68 | 236 |
| | DISE | 67 | 54 | 45 | 166 |
| | Deviation | 26 | 21 | 23 | 70 |
| | % of Deviation | 21.67 | 23.08 | 26.14 | 23.41 |
| | Precision Level | 78.33 | 76.92 | 73.86 | 76.59 |

TABLE – 4.17
COMPARISON OF PES DATA WITH DISE DATA ON TYPE OF BOUNDARY
WALL OF THE SCHOOL

| Type of Boundary Wall | | Sundargarh | Koraput | Kendrapara | TOTAL |
|-----------------------------|-----------------|------------|---------|------------|-------|
| Pucca & Pucca but broken | PES | 54 | 30 | 26 | 110 |
| | DISE | 52 | 20 | 21 | 93 |
| | Deviation | 02 | 10 | 05 | 17 |
| | % of Deviation | 1.67 | 10.99 | 5.68 | 5.69 |
| | Precision Level | 98.33 | 89.01 | 94.32 | 94.31 |
| Barbed Wire | PES | 18 | 01 | 07 | 26 |
| | DISE | 01 | 11 | 12 | 24 |
| | Deviation | 17 | 10 | 05 | 02 |
| | % of Deviation | 14.17 | 10.99 | 5.68 | 0.67 |
| | Precision Level | 85.83 | 89.01 | 94.32 | 99.33 |
| Hedges | PES | 08 | 17 | 07 | 32 |
| | DISE | 08 | 15 | 09 | 32 |
| | Deviation | 00 | 02 | 02 | 00 |
| | % of Deviation | 00 | 2.20 | 2.27 | 00 |
| | Precision Level | 100 | 97.80 | 97.73 | 100 |
| Boundary Wall not available | PES | 40 | 43 | 48 | 131 |
| | DISE | 59 | 45 | 46 | 150 |
| | Deviation | 19 | 02 | 02 | 19 |
| | % of Deviation | 15.83 | 2.20 | 5.68 | 6.35 |
| | Precision Level | 84.17 | 97.80 | 94.32 | 93.65 |

TABLE – 4.18
COMPARISON OF PES DATA WITH DISE DATA ON AVAILABILITY OF
PLAY GROUND IN THE SCHOOL

| Availability of Play Ground | | Sundargarh | Koraput | Kendrapara | TOTAL |
|-----------------------------|-----------------|------------|---------|------------|-------|
| Available | PES | 26 | 08 | 16 | 50 |
| | DISE | 40 | 12 | 18 | 70 |
| | Deviation | 14 | 04 | 02 | 20 |
| | % of Deviation | 11.67 | 4.40 | 2.27 | 6.69 |
| | Precision Level | 88.33 | 95.60 | 97.73 | 93.31 |
| Not Available | PES | 94 | 83 | 72 | 249 |
| | DISE | 80 | 79 | 70 | 229 |
| | Deviation | 14 | 04 | 02 | 20 |
| | % of Deviation | 11.67 | 4.40 | 2.27 | 6.69 |
| | Precision Level | 88.33 | 95.60 | 97.73 | 93.31 |

TABLE – 4.19
COMPARISON OF PES DATA WITH DISE DATA ON SOURCE OF
DRINKING WATER FOR SCHOOLS

| Type of Schools | | Sundargarh | Koraput | Kendrapara | TOTAL |
|--------------------|-----------------|------------|---------|------------|-------|
| Tube Well | PES | 91 | 49 | 68 | 208 |
| | DISE | 104 | 49 | 72 | 225 |
| | Deviation | 13 | 00 | 04 | 17 |
| | % of Deviation | 10.83 | 00 | 4.55 | 5.69 |
| | Precision Level | 89.17 | 100 | 95.45 | 94.31 |
| Well | PES | 06 | 17 | 03 | 26 |
| | DISE | 00 | 07 | 02 | 09 |
| | Deviation | 06 | 10 | 01 | 17 |
| | % of Deviation | 5.00 | 10.99 | 1.14 | 5.69 |
| | Precision Level | 95.00 | 89.01 | 98.86 | 94.31 |
| Tap supplied Water | PES | 09 | 02 | 00 | 11 |
| | DISE | 00 | 00 | 02 | 02 |
| | Deviation | 09 | 02 | 02 | 09 |
| | % of Deviation | 7.50 | 2.20 | 2.27 | 3.01 |
| | Precision Level | 92.50 | 97.80 | 97.73 | 96.99 |
| Others | PES | 01 | 00 | 05 | 06 |
| | DISE | 06 | 03 | 00 | 09 |
| | Deviation | 05 | 03 | 05 | 03 |
| | % of Deviation | 4.17 | 3.30 | 5.68 | 1.00 |
| | Precision Level | 95.83 | 96.70 | 94.32 | 99.00 |
| No Drinking Water | PES | 13 | 23 | 12 | 48 |
| | DISE | 10 | 32 | 12 | 54 |
| | Deviation | 03 | 09 | 00 | 06 |
| | % of Deviation | 2.50 | 9.89 | 00 | 2.01 |
| | Precision Level | 97.50 | 90.11 | 100 | 97.99 |

TABLE – 4.20
COMPARISON OF PES DATA WITH DISE DATA ON AVAILABILITY OF
COMPUTERS IN SCHOOLS

| Availability of Computers | | Sundargarh | Koraput | Kendrapara | TOTAL |
|-----------------------------|-----------------|------------|---------|------------|-------|
| Schools having Computer | PES | 01 | 05 | 01 | 07 |
| | DISE | 09 | 07 | 00 | 16 |
| | Deviation | 08 | 02 | 01 | 09 |
| | % of Deviation | 6.67 | 2.20 | 1.14 | 3.01 |
| | Precision Level | 93.33 | 97.80 | 98.86 | 96.99 |
| Schools not having Computer | PES | 119 | 86 | 87 | 292 |
| | DISE | 111 | 84 | 88 | 283 |
| | Deviation | 08 | 02 | 01 | 09 |
| | % of Deviation | 6.67 | 2.20 | 1.14 | 3.01 |
| | Precision Level | 93.33 | 97.80 | 98.86 | 96.99 |

TABLE – 4.21
COMPARISON OF PES DATA WITH DISE DATA ON AVAILABILITY OF
RAMPS IN THE SCHOOLS

| Availability of Ramps | | Sundargarh | Koraput | Kendrapara | TOTAL |
|-----------------------|-----------------|------------|---------|------------|-------|
| Available | PES | 13 | 13 | 24 | 50 |
| | DISE | 38 | 23 | 16 | 77 |
| | Deviation | 25 | 10 | 08 | 27 |
| | % of Deviation | 20.83 | 10.99 | 9.09 | 9.03 |
| | Precision Level | 79.17 | 89.01 | 90.91 | 90.97 |
| Not Available | PES | 107 | 78 | 64 | 249 |
| | DISE | 82 | 68 | 72 | 222 |
| | Deviation | 25 | 10 | 08 | 27 |
| | % of Deviation | 20.83 | 10.99 | 9.09 | 9.03 |
| | Precision Level | 79.17 | 89.01 | 90.91 | 90.97 |

TABLE – 4.22
COMPARISON OF PES DATA WITH DISE DATA ON AVAILABILITY OF
TEACHERS' FURNITURE

| Availability of Teachers' Furniture | | Sundargarh | Koraput | Kendrapara | TOTAL |
|-------------------------------------|-----------------|------------|---------|------------|-------|
| Available | PES | 107 | 78 | 19 | 204 |
| | DISE | 04 | 00 | 00 | 04 |
| | Deviation | 103 | 78 | 19 | 200 |
| | % of Deviation | 85.83 | 85.71 | 21.59 | 66.89 |
| | Precision Level | 14.17 | 14.29 | 78.41 | 33.11 |
| Not Available | PES | 13 | 13 | 69 | 95 |
| | DISE | 116 | 91 | 88 | 295 |
| | Deviation | 103 | 78 | 19 | 200 |
| | % of Deviation | 85.83 | 85.71 | 21.59 | 66.89 |
| | Precision Level | 14.17 | 14.29 | 78.41 | 33.11 |

TABLE – 4.23
COMPARISON OF PES DATA WITH DISE DATA ON AVAILABILITY OF
FURNITURE FOR THE STUDENTS

| Availability of Furniture | | Sundargarh | Koraput | Kendrapara | TOTAL |
|---------------------------|-----------------|------------|---------|------------|-------|
| Available | PES | 36 | 19 | 38 | 93 |
| | DISE | 00 | 00 | 00 | 00 |
| | Deviation | 36 | 19 | 38 | 93 |
| | % of Deviation | 30.00 | 20.88 | 43.18 | 31.10 |
| | Precision Level | 70.00 | 79.12 | 56.82 | 68.90 |
| Not Available | PES | 84 | 72 | 50 | 206 |
| | DISE | 120 | 91 | 88 | 299 |
| | Deviation | 36 | 19 | 38 | 93 |
| | % of Deviation | 30.00 | 20.88 | 43.18 | 31.10 |
| | Precision Level | 70.00 | 79.12 | 56.82 | 68.90 |

TABLE – 4.24

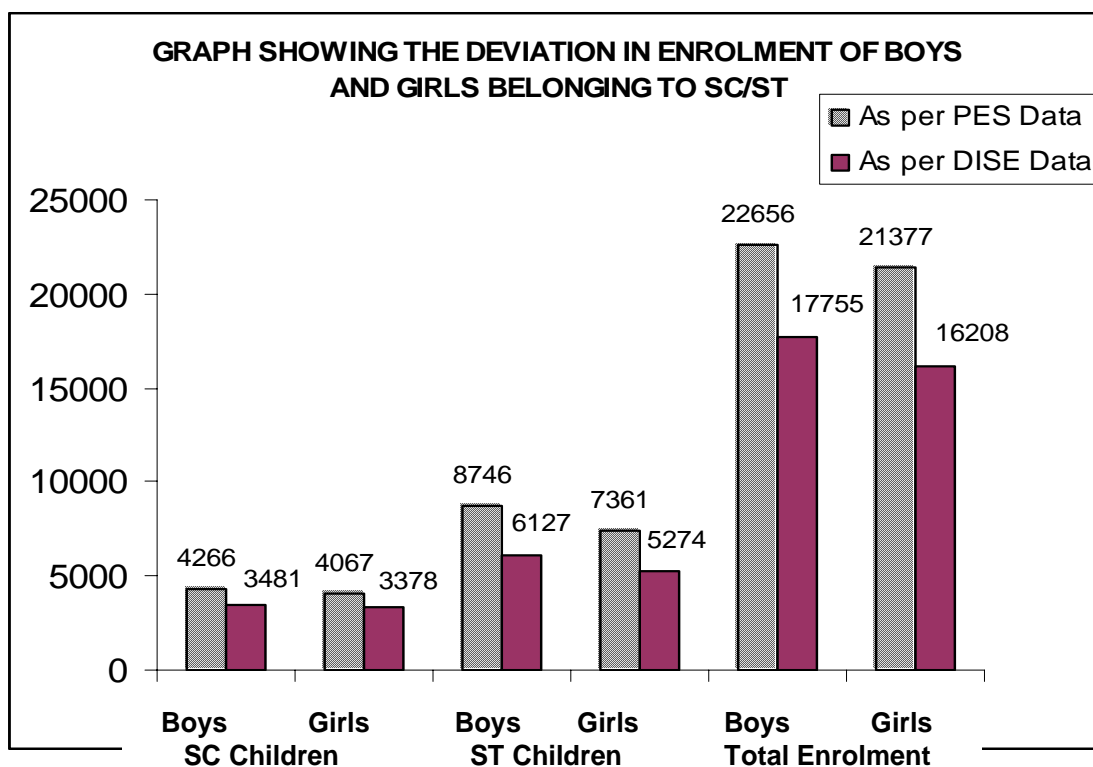
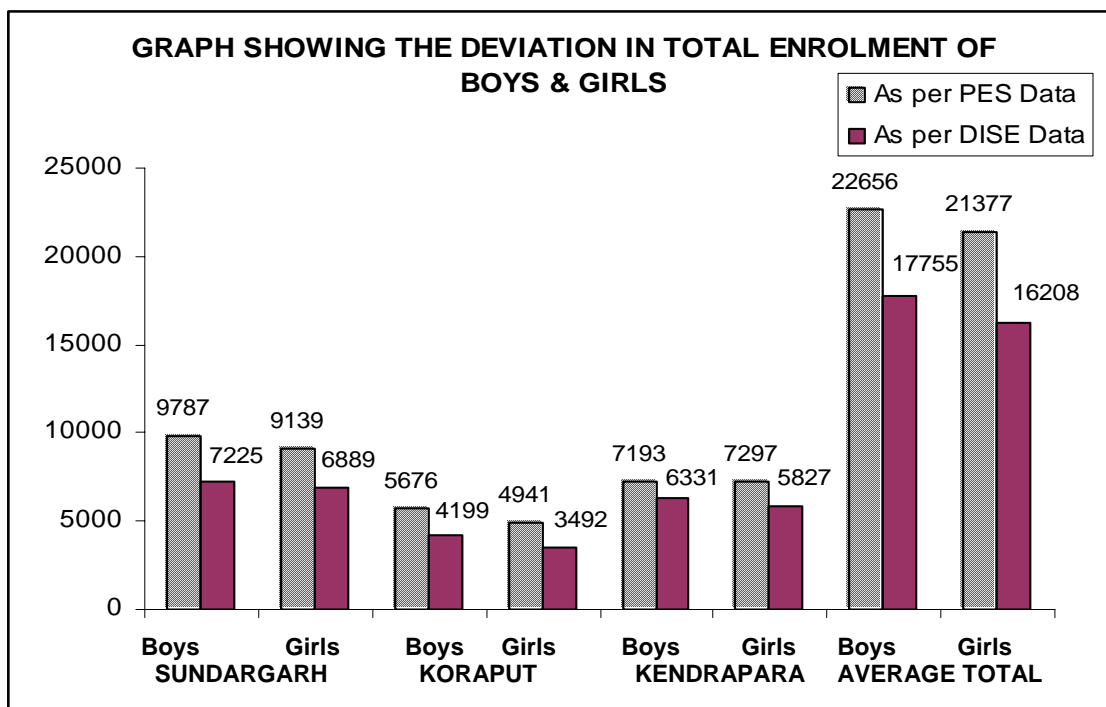
**COMPARISON OF PES DATA WITH DISE DATA ON AVAILABILITY OF
KITCHEN SHED IN THE SCHOOL**

| Availability of Kitchen Shed | | Sundargarh | Koraput | Kendrapara | TOTAL |
|------------------------------|-----------------|------------|---------|------------|-------|
| Available | PES | 58 | 36 | 19 | 113 |
| | DISE | 33 | 22 | 14 | 69 |
| | Deviation | 25 | 14 | 05 | 44 |
| | % of Deviation | 20.83 | 15.38 | 05.68 | 14.72 |
| | Precision Level | 79.17 | 84.62 | 94.32 | 85.28 |
| Not Available | PES | 62 | 55 | 69 | 186 |
| | DISE | 87 | 69 | 74 | 230 |
| | Deviation | 25 | 14 | 05 | 44 |
| | % of Deviation | 20.83 | 15.38 | 05.68 | 14.72 |
| | Precision Level | 79.17 | 84.62 | 94.32 | 85.28 |

TABLE – 4.25

**COMPARISON OF PES DATA WITH DISE DATA ON CHILDRENS'
ENROLMENT IN THE ACADEMIC YEAR – 2006**

| Children's Enrolment Position | | Sundargarh | | Koraput | | Kendrapara | | TOTAL | |
|-------------------------------|------------|------------|-------|---------|-------|------------|-------|-------|-------|
| | | Boys | Girls | Boys | Girls | Boys | Girls | Boys | Girls |
| Total Enrolment | PES | 9787 | 9139 | 5676 | 4941 | 7193 | 7297 | 22656 | 21377 |
| | DISE | 7225 | 6889 | 4199 | 3492 | 6331 | 5827 | 17755 | 16208 |
| | Difference | 2562 | 2250 | 1477 | 1449 | 862 | 1470 | 4901 | 5169 |
| SC Children Enrolment | PES | 1053 | 1109 | 1323 | 1141 | 1890 | 1817 | 4266 | 4067 |
| | DISE | 1060 | 1176 | 856 | 720 | 1565 | 1482 | 3481 | 3378 |
| | Difference | 07 | 67 | 467 | 421 | 325 | 335 | 785 | 689 |
| ST Children Enrolment | PES | 6038 | 5253 | 2670 | 2037 | 38 | 71 | 8746 | 7361 |
| | DISE | 3957 | 3621 | 2104 | 1591 | 66 | 62 | 6127 | 5274 |
| | Difference | 2081 | 1632 | 566 | 446 | 28 | 09 | 2619 | 2087 |



A comparison of the DISE data in relation to PES data in respect of enrolment figures indicates an unreasonable percentage of deviation. Even comparison of the absolute numbers shows a wide variation.

TABLE – 4.26
COMPARISON OF PES DATA WITH DISE DATA ON DISABILITIES OF
PRESENT ACADEMIC YEAR 2006

| Children's Admission | Items | Sundargarh | | Koraput | | Kendrapara | | TOTAL | |
|--------------------------|-----------------|------------|-------|---------|-------|------------|-------|-------|-------|
| | | Boys | Girls | Boys | Girls | Boys | Girls | Boys | Girls |
| Children with Disability | PES | 27 | 21 | 31 | 27 | 132 | 101 | 190 | 149 |
| | DISE | 94 | 72 | 46 | 34 | 140 | 70 | 280 | 176 |
| | Deviation | 67 | 51 | 15 | 07 | 08 | 31 | 90 | 27 |
| | % of Deviation | 55.83 | 42.50 | 16.48 | 07.69 | 09.09 | 35.23 | 30.10 | 09.03 |
| | Precision Level | 44.17 | 57.50 | 83.52 | 92.31 | 90.91 | 64.77 | 69.90 | 90.97 |

TABLE – 4.27
PERCENTAGE DEVIATION AND PRECISION LEVEL OF DISE DATA
FROM/WITH THE PES DATA TAKEN TOGETHER FOR
ALL COMPARABLE ITEMS

| Sl. No. | Description of Comparable Items | | Quantitative Values under | | Deviation | % of Deviation | Precision Level |
|---------|---------------------------------|--------------------------------------|---------------------------|------|-----------|----------------|-----------------|
| | | | PES | DISE | | | |
| 01. | Category of Schools | Pri. | 141 | 154 | 13 | 4.35 | 95.65 |
| | | Pri.+UP | 136 | 120 | 16 | 5.35 | 94.65 |
| | | U.P | 22 | 24 | 02 | 0.67 | 99.33 |
| 02. | Type of Schools | Boys | - | - | - | - | - |
| | | Girls | 02 | 00 | 02 | 0.67 | 99.33 |
| | | Coeducation | 297 | 299 | 02 | 0.67 | 99.33 |
| 03. | Location of Schools | Rural | 268 | 26 | 00 | 00 | 100 |
| | | Urban | 31 | 31 | 00 | 00 | 100 |
| 04. | Lowest Class in Schools | I | 271 | 274 | 03 | 1.00 | 99.00 |
| | | VI | 28 | 25 | 03 | 1.00 | 99.00 |
| 05. | Highest Class in Schools | III / IV | - | - | - | - | - |
| | | V | 143 | 154 | 11 | 3.68 | 96.32 |
| | | VII | 156 | 145 | 11 | 3.68 | 96.32 |
| 06. | School Management | Deptt. of School & Mass Edn. (Govt.) | 291 | 292 | 01 | 0.33 | 99.67 |
| | | Private Aided/Taken Over & Others | 08 | 07 | 01 | 0.33 | 99.67 |
| 07. | Residential Status | Residential | 15 | 17 | 02 | 0.67 | 99.33 |
| | | Non Residential | 284 | 271 | 13 | 4.35 | 95.65 |

| | | | | | | | |
|-----|-----------------------------------|----------------------------------|---|-----|-----|-------|-------|
| | | Not Responded | 00 | 11 | 11 | 3.67 | 96.32 |
| 08. | Part of Shift Schools | Being a part of Shift School | 08 | 06 | 02 | 0.67 | 99.33 |
| | | Not Being a part of Shift School | 291 | 282 | 09 | 3.01 | 96.99 |
| 09. | Sanction/in position teachers | Sanctioned Strength | TEACHERS SANCTIONED POST DATA AND TEACHERS IN POSITION DATA COULD NOT BE COMPARED DUE TO NON RECEIPT OF DATA IN COMPLETE FORM. | | | | |
| | | Teachers in Position | | | | | |
| | | Not Responded | | | | | |
| 10. | Status of School Building | Private | 05 | 01 | 04 | 1.34 | 98.66 |
| | | Govt. | 292 | 295 | 03 | 1.00 | 99.00 |
| | | Rented/Others | 02 | 01 | 01 | 0.33 | 99.67 |
| | | No Building at all | 00 | 02 | 02 | 0.67 | 99.33 |
| 11. | No. of Building Blocks in Schools | One | DISE DATA NOT AVAILABLE FOR 03 NOS. OF SCHOOLS OF KENDRAPARA DISTRICT. HENCE, COULD NOT BE COMPARED. | | | | |
| | | Two | | | | | |
| | | Three or More | | | | | |
| | | No Building at all | | | | | |
| 12. | Types of School Building | Pucca | 854 | 629 | 225 | 75.25 | 24.75 |
| | | Partially Pucca | 635 | 740 | 105 | 35.12 | 64.88 |
| | | Kachha | 86 | 50 | 36 | 12.04 | 87.96 |
| 13. | Condition of Class Rooms | Good | 629 | 763 | 134 | 44.82 | 55.18 |
| | | Need Minor Repair | 407 | 477 | 70 | 23.41 | 76.59 |
| | | Need Major Repair | 513 | 420 | 93 | 31.10 | 68.90 |
| 14. | Common Toilet | Common Toilet Available | 175 | 156 | 19 | 6.35 | 93.65 |
| | | Common Toilet not available | 124 | 143 | 19 | 6.35 | 93.65 |
| 15. | Separate Toilet for Girls | Available | 129 | 81 | 48 | 16.05 | 83.95 |
| | | Not Available | 170 | 218 | 48 | 16.05 | 83.95 |
| 16. | Electricity in Schools | Available | 63 | 133 | 70 | 23.41 | 76.59 |
| | | Not Available | 236 | 166 | 70 | 23.41 | 76.59 |
| 17. | Condition of Boundary Walls | Pucca & Pucca but broken | 110 | 93 | 17 | 5.69 | 94.31 |
| | | Barbed Wire | 26 | 24 | 02 | 0.67 | 99.33 |
| | | Hedges | 32 | 32 | 00 | 00 | 100 |
| | | Boundary Wall not available | 131 | 150 | 19 | 6.35 | 93.65 |
| 18. | Availability of Play Ground | Available | 50 | 70 | 20 | 6.69 | 93.31 |
| | | Not Available | 249 | 229 | 20 | 6.69 | 93.31 |
| 19. | Sources of Drinking Water | Tube Well | 208 | 225 | 17 | 5.69 | 94.31 |
| | | Well | 26 | 09 | 17 | 5.69 | 94.31 |
| | | Tap Supplied Water | 11 | 02 | 09 | 3.01 | 96.99 |
| | | Others | 06 | 09 | 03 | 1.00 | 99.00 |
| | | No Drinking Water | 48 | 54 | 06 | 2.01 | 97.99 |

| | | | | | | | |
|-----|-------------------------------------|---------------------------------|-------|-------|------|-------|-------|
| 20. | Availability of Computers | Schools having Computer | 07 | 16 | 09 | 3.01 | 96.99 |
| | | Schools Not having Computer | 292 | 283 | 09 | 3.01 | 96.99 |
| 21. | Availability of Ramps | Available | 50 | 77 | 27 | 9.03 | 90.97 |
| | | Not Available | 249 | 222 | 27 | 9.03 | 90.97 |
| 22. | Availability of Teachers' furniture | Available | 204 | 04 | 200 | 66.89 | 33.11 |
| | | Not Available | 95 | 295 | 200 | 66.89 | 33.11 |
| 23. | Availability of Students' furniture | Available | 93 | 00 | 93 | 31.10 | 68.90 |
| | | Not Available | 206 | 299 | 93 | 31.10 | 68.90 |
| 24. | Availability of Kitchen Shed | Available | 113 | 69 | 44 | 14.72 | 85.28 |
| | | Not Available | 186 | 230 | 44 | 14.72 | 85.28 |
| 25. | Children Enrolment, 2006 | Total Enrolment Boys | 22656 | 17755 | 4901 | - | - |
| | | Girls | 21377 | 16208 | 5169 | - | - |
| | | SC Children Enrolment Boys | 4266 | 3481 | 785 | - | - |
| | | Girls | 4067 | 3378 | 689 | - | - |
| | | ST Children Enrolment Boys | 8746 | 6127 | 2619 | - | - |
| | | Girls | 7361 | 5274 | 2087 | - | - |
| 26. | Children with disabilities | Children with Disabilities Boys | 190 | 280 | 90 | 30.10 | 69.90 |
| | | Girls | 149 | 176 | 27 | 9.03 | 90.97 |

TABLE – 4.28

OVERALL PERCENTAGE OF DEVIATION OF DISE DATA FROM THE PES DATA

| | District | Deviation | Precision level |
|---------------------------|------------|--------------|-----------------|
| 1. | Sundargarh | 14.49 | 85.51% |
| 2. | Koraput | 14.67 | 85.33% |
| 3. | Kendrapada | 11.93 | 88.07% |
| AVG. TOTAL (STATE) | | 13.69 | 86.31% |



CHAPTER - V

FINDINGS AND CONCLUSIONS

5.1 MAJOR FINDINGS

The comparative analysis of the DISE data with that of PES data in the total has been presented in Table No.4.1 to 4.28. Items in Table No. 1 to 26 reflect the quantitative value of different categories of items under PES and DISE data. The exact deviation, percentage of deviation and precision level have been recorded in the table disregarding inter district variations. The major findings revealed in the tables are as follows :

1. The overall deviation of DISE data from PES data taking all comparable items and sub items into consideration is 13.69% thereby giving a precision level of 86.31% for use in planning.
2. There are very few items rather only two items which indicate a Nil deviation or cent percent precision level. They are location of school in terms of area i.e. Rural and Urban and condition of boundary wall with Hedges.
3. Items with a variation of 0.33% to 10% include items such as category of school, types of school, lowest and highest class, school management, residential status, parts of shift school, boundary wall, drinking water, and availability of computer, common toilet, play ground, ramps, children with disability (girls).
4. Items with a deviation of more than 10% up to 75% include rest of the items like private school building – Kuchha, separate toilet for girls, kitchen shed (10 to 20% deviation); condition of class rooms requiring minor repair, availability of electricity in school (20 to 30% deviation); type of school building – partially pucca, class room condition – good and requiring major repair, students' furniture, children with disability - Boys (30 to 50% deviation); type of school building – Pucca, Teachers' furniture (50% to 75%).
5. Data with the widest variation is with regard to availability of students' furniture (31%), availability of teacher furniture (67%), and type of

school building – pucca (75%) with a precision level of 69%, 33% and 25% respectively. These variations are matters of serious concern.

6. Some of the items like condition of boundary wall, type of school building, sources of drinking water have been very clearly described in the D.C.F. In spite of that, the data enumerators have probably failed to understand the sub categories of items resulting in a variation up to 75%. It indicates that proper training with field experience must be given to all persons involved with DISE data collection.
7. As per the observation of our field investigators and supervisors although most of the headmasters were cooperative, they were not familiar with the DISE format. The DISE format is a very pin pointed and comprehensive format and should be used for updating DISE data. What has been observed is lack of understanding of different items of the DISE format on the part of the personnel involved with the process.

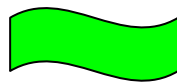
5.2 CONCLUSION

The 5% of cross checking of DISE data has reflected some important findings. They are :

1. The overall deviation of PES data from the DISE data at the state level was found to be 13.69% ensuring a precision level of 86.31%.
2. Data related to utilization of school funds, an important component of SSA, were not available. This is a matter of serious concern.
3. The comparison of DISE data with PES data shows a variation to the extent of as large as 75% in respect of items having more categories of sub items.
4. Some items in the DISE format have invited larger variations which might be due to several reasons such as inability of the enumerators in proper understanding of the format, lack of adequate training and exposure, complexity in the components of items, and compilation of DISE data from three different formats as pointed out earlier.

5. The enrolment figures provided in the DISE data when compared with the PES data indicate a very large gap in most of the cases reflecting under reporting in enrolment figures.
6. The key persons involved with maintenance of DISE data i.e. the Headmasters were not found to be familiar with the DISE format.

The above important findings necessitates everyone involved with the process of implementation of SSA activities to be very careful during the phase of data collection. To be very specific, the field personnel who are engaged in enumeration work/data updating, must be given adequate training to handle the work with responsibility to collect quality data. Further, the DISE format supplied by NUEPA is very comprehensive and has provisions to add or delete items in it depending on state level requirements. An attempt may be made to incorporate state requirements in the DISE format and delete items which are not necessary for the state. This will facilitate making the DCF simple and straight forward for easy handling by the enumerators. At least one more teacher along with the Headmaster from every school be given training for maintaining the correctness and regularity of this sacred exercise.



ANNEXURE - A

DETAILS OF THE SAMPLE SCHOOLS

SUNDARGARH DISTRICT (D – 30)

| Sl. No. | Name of the Block/MPL | Name of the School | School Code | Total No. Of schools |
|---------|-----------------------|--------------------------------|-------------|----------------------|
| 01. | Bonai | Talita Primary School | 0406401 | 05 |
| | | Badgogua Nodal U.P.School | 0400101 | |
| | | Tendra U.P. School | 0407002 | |
| | | Kasada U.G. U.P. School | 0406501 | |
| | | Baurkela Primary School | 0401501 | |
| 02. | Gurundia | Kundheidiha Primary School | 0508304 | 07 |
| | | Jarda T.O. U.P.School | 0506903 | |
| | | Nalaghati Primary School | 0507001 | |
| | | Soldega Primary School | 0513601 | |
| | | Bhurung Primary School | 0500301 | |
| | | Musaposh Primary School | 0509801 | |
| | | Balabhadra Prasad U.P.School | 0500101 | |
| 03. | Lahunipada | Khatia Bhanguni U.G.U.P.School | 1021101 | 07 |
| | | Kachupada Primary School | 1013901 | |
| | | Kurda Nodal U.P. School | 1006901 | |
| | | Sadhubahal Primary School | 1009601 | |
| | | Kapanda U.G.U.P. School | 1000701 | |
| | | Badpurunapani Primary School | 1000201 | |
| | | Kudapara Primary School | 1004501 | |
| 04. | Koira | Kamarposh Project U.P. School | 0700201 | 06 |
| | | Bimlagarh U.G. U.P. School | 0700302 | |
| | | Kunduruburu Primary School | 0704301 | |
| | | Koira Project U.P. School | 0706504 | |
| | | Kadodiha Project U.P. School | 0706302 | |
| | | Toda Colony U.G. U.P. School | 0704701 | |

| | | | | |
|-----|-----------------------|--------------------------------------|---------|-----------|
| 05. | Subdega | Rasarajpur U.P.School | 1502804 | 06 |
| | | Podajalaga U.P.School | 1505203 | |
| | | Damkuda U.P.School | 1500101 | |
| | | Malidihi Primary School | 1501401 | |
| | | Karamdihi Primary School | 1502705 | |
| | | Sandamkuda Primary School | 1500102 | |
| 06. | Balisankara | Tumlia Nodal U.P.School | 0107804 | 08 |
| | | Sapdagar Nodal U.P.School | 0107701 | |
| | | Talsara Nodal U.P.School | 0106303 | |
| | | Tiklipara Project Primary U.P.School | 0106602 | |
| | | Balisankara Project U.P.School | 0100402 | |
| | | Rampur Primary School | 0104002 | |
| | | Saunamara Primary School | 0105701 | |
| | | Budabahal U.P. School | 0105501 | |
| 07. | Sundargarh MPL | Ranibagicha U.P. School | 2100101 | 01 |
| 08. | Sundargarh | Kirai Primary School | 1604802 | 07 |
| | | Kirai U.P. School | 1604801 | |
| | | Salepali Nodal U.P. School | 1605802 | |
| | | Jarmal U.P. School | 1608801 | |
| | | Rupidihi U.P. School | 1606401 | |
| | | Kundukela Primary School | 1605002 | |
| | | Rengalbud Primary School | 1602301 | |
| 09. | Bisra | Barhabanas U.P. School | 0303301 | 05 |
| | | Kukuda Project U.P. School | 0304301 | |
| | | Bandomunda (B) U.P. School | 0301602 | |
| | | Govt. U.P. School | 0301104 | |
| | | Manko Project U.P. School | 0305001 | |

| | | | | |
|-----|------------------------|--------------------------------------|---------|-----------|
| 10. | Tangarpali | Abankela P. School | 1704601 | 05 |
| | | Bausmunda Primary School | 1702501 | |
| | | Pheldhudi Primary School | 1707102 | |
| | | Gambharidihi U.P. School | 1700202 | |
| | | Natabara U.P. School | 1707101 | |
| 11. | Lephipada | Sargipali (Centre) Primary School | 1210303 | 06 |
| | | Sukhajore Primary School | 1205203 | |
| | | Handipani Primary School | 1200103 | |
| | | Alapakatunahari Ashram | 1200101 | |
| | | Aunlabahal U.P.School | 1202701 | |
| | | Sarabgarh U.P. School | 1210002 | |
| 12. | Hemgir | Budhajharia Primary School | 0602401 | 09 |
| | | Ankelbira Nodal U.P. School | 0600102 | |
| | | Ratakhandi Primary School | 0607801 | |
| | | Balijori Primary School | 0610301 | |
| | | Badghumunda Primary School | 0600201 | |
| | | Naktideul Primary School | 0603804 | |
| | | Ostali Primary School | 0604901 | |
| | | Sarbahal Primary School | 0610701 | |
| | | Konika Primary School | 0608503 | |
| 13. | Kutra | Amgova U.P. School | 0900102 | 05 |
| | | Jharen Primary School | 0903503 | |
| | | Pelkapada Project U.P. School | 0902003 | |
| | | Damposh Primary School | 0901401 | |
| | | Nirabahal Primary School | 0904402 | |
| 14. | Rajgangpur(MPL) | Gandhibahal Vidya Mandir Pry. School | 1900101 | 01 |

| | | | | |
|-----|-------------------------|-------------------------------------|---------|-----------|
| 15. | Rajgangpur | Ranthupara U.P. School | 1405505 | 06 |
| | | Kutunia Nodal U.P. School | 1405504 | |
| | | Jampali Project U.P. School | 1403901 | |
| | | Alanda U.P. School | 1400101 | |
| | | Purna Chandra U.P. School | 1406306 | |
| | | Chungimati U.G. U.P. School | 1402501 | |
| 16. | Bargaon | Bargaon Kachhar U.P. School | 0200203 | 06 |
| | | Bankibahal Primary School | 0200101 | |
| | | Pamra Nodal U.P. School | 0204704 | |
| | | Panderpali Mission Primary School | 0206204 | |
| | | Kharikamunda Primary School | 0201403 | |
| | | Kustuna U.P. School | 0204502 | |
| 17. | Lathikata | Saw Mill Primary School | 1104902 | 06 |
| | | Goibhanga Primary School | 1102701 | |
| | | Chikatmati U.P. School | 1102601 | |
| | | Lathikata Nodal U.P. School | 1106803 | |
| | | Sastri U.P. School, "Jalda – C" | 1104309 | |
| | | Suidihi U.G. U.P. School | 1108501 | |
| 18. | Nuagaon | Balimunda Primary School | 1300607 | 08 |
| | | Ankurpali Project Primary School | 1300101 | |
| | | Barilapta Primary School | 1302301 | |
| | | Chuabahal Project Primary School | 1307601 | |
| | | Hatibari Primary School | 1304202 | |
| | | Ganjhutola Primary School | 1310401 | |
| | | Nuagaon Block Colony Primary School | 1310201 | |
| | | Jharbeda Primary School | 1308203 | |
| 19. | Birmitrapur(MPL) | Raipura Project U.P. School | 1800102 | 01 |

| | | | | |
|-----|-----------------------|-----------------------------------|---------|-----------|
| 20. | Kuarmunda | Andali Jambahal Nodal U.P. School | 0807701 | 08 |
| | | Adivasi Colony Primary School | 0805701 | |
| | | Sarandaposh Primary School | 0808401 | |
| | | Dhangrinacha U.P. School | 0800601 | |
| | | Andali Jambahal Ashram School | 0800101 | |
| | | Andali Primary School | 0800102 | |
| | | Riun U.P. School | 0805801 | |
| | | Teliposh Primary School | 0805901 | |
| | | | | |
| 21. | Rourkela (MPL) | Basanti Colony U.P. School | 2000803 | 08 |
| | | Acharya Harihara U.P. School | 2001103 | |
| | | Chhend Housing U.P. School | 2003205 | |
| | | Uditnagar Govt. Primary School | 2001703 | |
| | | Phulbari Nodal U.P. School | 2005302 | |
| | | Madhusudan U.P. School | 2002602 | |
| | | Panposh Nodal U.P. School | 2001701 | |
| | | Farkera Primary School | 2000304 | |

KORAPUT DISTRICT (D – 20)

| Sl. No. | Name of the Block / MPL | Name of the School | School Code | Total No. of Schools |
|---------|-------------------------|-----------------------------------|-------------|----------------------|
| 01. | Laxmipur | Badasankha U.P. School | 1000501 | 06 |
| | | Kakiriguma U.P. School | 1003304 | |
| | | Kegza Primary School | 1003901 | |
| | | Bageipadar U.P. School | 1005703 | |
| | | Bastar Bhandra U.P. School | 1001001 | |
| | | Kakiriguma Primary School | 1002504 | |
| 02. | Pottangi | Parasmanaguda Primary School | 1309002 | 06 |
| | | Gangrajpur U.P. School | 1301302 | |
| | | Exboard Primary School | 1306604 | |
| | | Sargiguda U.P. School | 1305303 | |
| | | Sunki Primary School | 1309004 | |
| | | K.Metabalasa Primary School | 1308601 | |
| 03. | Joypure | Ambaguda U.P. School | 0500101 | 11 |
| | | Chandate N. Primary School | 0503201 | |
| | | Bamuniput Primary School | 0501802 | |
| | | Hadia U.P. School | 5039056 | |
| | | Bhimaguda Primary School | 0507801 | |
| | | Ghiuri U.P. School | 0506501 | |
| | | B.J. – 1 Primary School | 0507301 | |
| | | Umuri U.P. School | 0508501 | |
| | | Dhepaguda Primary School | 1500602 | |
| | | Dhangidi Street Primary School | 1501802 | |
| | | Harijan Sahi U.P. School | 1500701 | |
| 04. | Narayan Patana | Narayan Patana (B) Primary School | 1208602 | 05 |
| | | Narayan Patana U.P. School | 1208603 | |
| | | Odiapentha U.P. School | 1208701 | |
| | | Pangapalur U.P. School | 1208901 | |
| | | Bikrampur U.P. School | 1208101 | |
| | | Kokriguda Primary School | 1400105 | |

| | | | | |
|-----|--------------------|-----------------------------------|---------|-----------|
| 05. | Semiliguda | Majhipur N. U.P. School | 1402101 | 08 |
| | | Malipungura Primary School | 1403201 | |
| | | Pombis Primary School | 1405201 | |
| | | Bilaput Primary School | 1408407 | |
| | | Biliguda Primary School | 1801506 | |
| | | Gopabandhunagar U.P. School | 1801901 | |
| | | Kharaguda N. Primary School | 1802204 | |
| 06. | Kotpad | Exboard Primary School (Chandli) | 0701401 | 09 |
| | | Lahanja Primary School | 0701404 | |
| | | Sutipadar Primary School | 0704601 | |
| | | Guali Primary School | 0706201 | |
| | | Piringi Primary School | 0701901 | |
| | | Kunguguda N. Primary School | 1700104 | |
| | | Kenduguda Primary School | 1700102 | |
| | | Upper Kolab U.K.P. Primary School | 1701203 | |
| | | Aided Primary School | 1700451 | |
| 07. | Boriguma | Block Colony Primary School | 0303503 | 09 |
| | | Keraput N. U.P. School | 0301901 | |
| | | Disiri Street U.P. School | 0303504 | |
| | | Mundaguda U.P. School | 0314801 | |
| | | Konagam U.P. School | 0308603 | |
| | | Podeiguda Primary School | 0309902 | |
| | | Pandasguda U.P. School | 0312001 | |
| | | Nuagaon Primary School | 0314601 | |
| | | Semiliguda U.P. School | 0314901 | |
| 08. | Dasmantapur | Chanabada Primary School | 0410601 | 08 |
| | | Dumbaguda U.P. School | 0405401 | |
| | | P.Barikanta Primary School | 0402003 | |
| | | Ladibeda Primary School | 0402203 | |
| | | Duduriaguda Primary School | 0409806 | |
| | | Gaudbarikanta Primary School | 0402702 | |
| | | Godri Primary School | 0407501 | |
| | | K.Nuaguda U.P. School | 0416302 | |

| | | | | |
|-----|------------------|--------------------------------|---------|-----------|
| 09. | Nandapur | Atanda U.P. School | 1100201 | 08 |
| | | Bheja U.P. School | 1103101 | |
| | | Majhiput Primary School | 1112502 | |
| | | Gopabandhu Primary School | 1118503 | |
| | | Sankidi U.P.School | 1108409 | |
| | | Patrapandi N. U.P.School | 1122601 | |
| | | Godiput N. U.P. School | 1119901 | |
| | | Bailiguda Primary School | 1106501 | |
| 10. | Kundura | Assana U.P. School | 0800102 | 05 |
| | | Lima Nodal U.P. School | 0804704 | |
| | | Kaliakada U.P. School | 0806601 | |
| | | Naragam Primary School | 0802301 | |
| | | Kundura Primary School | 0806606 | |
| 11. | Bandhugam | Alanda U.P. School | 0100102 | 05 |
| | | Singiput Primary School | 0102901 | |
| | | Katulupeta U.P. School | 0100701 | |
| | | Sansarapalli Primary School | 0109011 | |
| | | K.Jaguguda U.P. School | 0104401 | |
| 12. | Koraput | Machhara U.P. School | 0609001 | 11 |
| | | S.C.Colony Primary School | 1600303 | |
| | | Thana Colony Primary School | 0600108 | |
| | | U.K.P.Colony Primary School | 1600704 | |
| | | Jhatiguda Primary School | 1601503 | |
| | | Upper Pakondala Primary School | 0608003 | |
| | | Dongri Nodal U.P.School | 0607401 | |
| | | Police Colony Primary School | 1600502 | |
| | | Parajasahi Primary School | 1600203 | |
| | | Ex Board U.P. School | 1600401 | |
| | | Machhara Primary School | 0606401 | |

| | | | | |
|-----|--------------------|--|---------|-----------|
| 13. | Baipariguda | Ramgiri Nodal U.P. School | 0209201 | 06 |
| | | Saraswati Sishu Mandir, Baipariguda | 0202672 | |
| | | Mariaguda Primary School | 0204401 | |
| | | Baligaon U.P. School | 0200303 | |
| | | Bichilkota Primary School | 0499050 | |
| | | Uminaguda Primary School | 0221501 | |
| | | | | |
| 14. | Lamtaputa | Kantiguda Primary School | 0911201 | 06 |
| | | Machhkunda Sebashram | 0903002 | |
| | | Surmal Primary School | 0903401 | |
| | | Chickanput Primary School | 0902501 | |
| | | Maliput U.P. School | 0911402 | |
| | | Lamtaput U.P. School | 0911401 | |

KENDRAPARA DISTRICT (D – 17)

| Sl. No. | Name of the Block/MPL | Name of the School | School Code | Total No. of Schools |
|---------|-----------------------|----------------------------------|-------------|----------------------|
| 01. | Aul | Malpatna U.G. U.P. School | 0103404 | 09 |
| | | Sitaleswar Primary School | 0109905 | |
| | | Bhuinpur Primary School | 0103103 | |
| | | Aul Urdu Girl's U.G. U.P. School | 0108801 | |
| | | Balakati U.G. U.P. School | 0102402 | |
| | | Mahasanani Primary School | 0203101 | |
| | | Singri G.P. Nodal U.P.School | 0112601 | |
| | | Tunga U.G. U.P. School | 0112902 | |
| | | Giribandha Primary School | 0103801 | |
| 02. | Raja Kanika | Singidi Project Primary School | 0810601 | 09 |
| | | Siko U.P. School | 0814902 | |
| | | Tentulikoli U.G. U.P. School | 0816601 | |
| | | Kusumpur U.P. School | 0808451 | |
| | | Deulatora Nodal U.P. School | 0805901 | |
| | | Janjalidebi Nodal U.P. School | 0800102 | |
| | | Govindpur U.G. U.P. School | 0802001 | |
| | | Nahuni Primary School | 0812301 | |
| | | Badataila Primary School | 0801201 | |
| 03. | Derabish | Binoba U.P. School | 0207501 | 10 |
| | | Ratadiakhanda Sahi High School | 0216901 | |
| | | Badamangarajpur Primary School | 0211101 | |
| | | Chhatrabandhu Nodal U.P. School | 0204101 | |
| | | Balia Urdu Primary School | 0200202 | |
| | | Sabalanga Primary School | 0215703 | |
| | | Jugajyoti Nodal U.P.School | 0214101 | |
| | | Mukundapur U.G. U.P. School | 0213401 | |
| | | Chandol U.G. U.P. School | 0203004 | |
| | | Caniamuhan Primary School | 0203402 | |

| | | | | |
|--------------------------|---------------------|---------------------------------------|-------------------|-----------|
| 04. | Kendrapara | Kacheripara Primary School (A) | 0400702 | 12 |
| | | Dutial U.P. School | 0412701 | |
| | | Indupur Primary School | 0406001 | |
| | | Jagannath U.P. School | 0403503 | |
| | | Fraser Girl's Primary School | 1001002 | |
| | | College Colony Practising U.P. School | 1002001 | |
| | | Balia U.P. School | 0400303 | |
| | | Narayani U.P. School | 0406502 | |
| | | Ayaba U.G. U.P. School | 0400101 | |
| | | Haladidiha Primary School | 0408101 | |
| | | Bharatpur Primary School | 0402410 | |
| | | Chakroda U.P. School | 0402603 | |
| | | 05. | Marshaghai | |
| Narayanpur U.P. School | 0609801 | | | |
| Angulai U.G. U.P. School | 0600701 | | | |
| Talasanga U.P. School | 0609101 | | | |
| Dolagobinda U.P. School | 0604101 | | | |
| Marshaghai U.P. School | 0607701 | | | |
| Badapal Primary School | 0604901 | | | |
| 06. | Mahakalapara | Chhatar U.G. U.P. School | 0502501 | 11 |
| | | Agni Kumari Nodal U.P. School | 0502201 | |
| | | Kharinasi Primary School | 0514401 | |
| | | B.B.Colony Primary School | 0518601 | |
| | | Balya Bikash U.P. School | 0513501 | |
| | | Gatanai Primary School | 0520701 | |
| | | Badagan Primary School | 0508801 | |
| | | Alailo Primary School | 0508003 | |
| | | Bilipada U.G. U.P. School | 0500301 | |
| | | Mangalpur Nodal U.P. School | 0516801 | |
| | | Santimayee Nodal U.P. School | 0505001 | |

| | | | | |
|---|--------------------|--|-----------------|-----------|
| 07. | Gardapur | Palsuda Project Urdu U.P. School | 0308302 | 08 |
| | | Andhalo U.P. School | 0305002 | |
| | | Bishnupriya Primary School | 0313501 | |
| | | Panchabati Girl's U.P. School | 0311401 | |
| | | Haridaspur U.G. U.P. School | 0303101 | |
| | | Korua Kanchilo Primary School | 0310402 | |
| | | Bhada Kamal U.P. School | 0311702 | |
| | | Gotrabil Primary School | 0306501 | |
| 08. | Pattamundai | Kanipal Project Primary School | 0701101 | 12 |
| | | Jigaran U.G. U.P. School | 0701301 | |
| | | Kundupur Primary School | 0709802 | |
| | | Hahanababi Primary School | 0705601 | |
| | | Alapua Nodal U.P. School | 0700102 | |
| | | Subalapur Primary School | 0700203 | |
| | | Thakura Patana Primary School | 1101701 | |
| | | Kasananta U.G. U.P. School | 1100801 | |
| | | Junupanga Primary School | 0711601 | |
| | | Alatanga Primary School | 0703901 | |
| | | Sujanpur Primary School | 0706801 | |
| | | Utkalmani Nodal Bidya Mandir, San Mohanapur | 0713401 | |
| | | 09. | Rajnagar | |
| Gobindapur Primary School | 0901801 | | | |
| Balikana U.G. U.P. School | 0921501 | | | |
| Chandanpur Nodal U.P. School | 0900401 | | | |
| Kapileswar U.P. School | 0925551 | | | |
| Baragan Matia Mangala Nodal U.P.School | 0905701 | | | |
| Hansua Primary School | 0916201 | | | |
| Sidheswari Nodal U.P. School | 0912801 | | | |
| Gahmasikhar Primary School | 0908801 | | | |
| Raja Rajeswar U.G. U.P. School | 0911901 | | | |

ANNEXURE : B – SAMPLE COPY OF DISTRICT INFORMATION SYSTEM
FOR EDUCATION SPECIAL DCF FOR POST
ENUMERATION SURVEY

ANNEXURE : C - SAMPLE COPY OF DATA COLLECTION FORMAT
[DISTRICT INFORMATION SYSTEM FOR EDUCATION
(DISE) (Filled in Formats supplied by OPEPA)]

